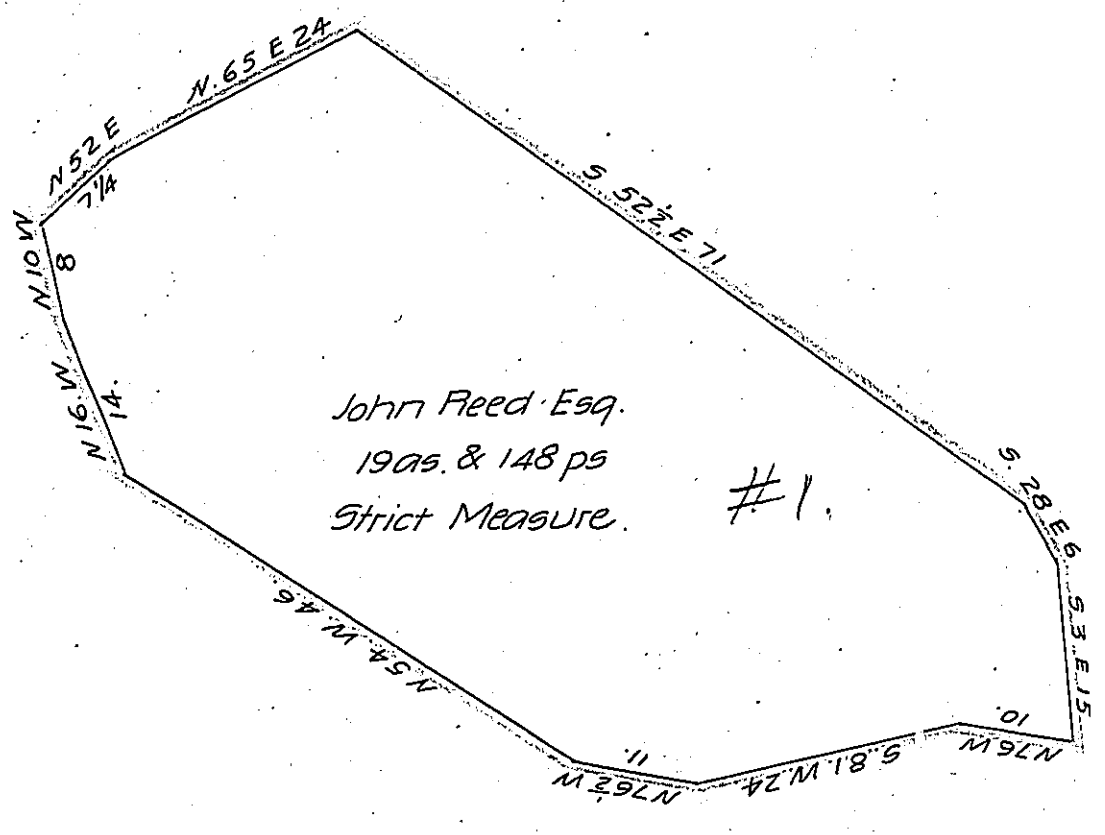




York County Shore



John Feed Esq.  
19as. & 148 ps  
Strict Measure. #1.

Lancaster County Shore

A Draught of an Island situate in the river Susquehanna  
Called Feeds Island No. 1, between Burkholders and ankrims  
Island opposite or about the Indian Step falls in Martick Town-  
ship Lancaster County containing nineteen acres and one hundred  
and forty eight perches of land Strict Measure Surveyed in pursuance  
of a Warrant dated the 10th of November A.D. 1813, Granted unto  
John Feed & Co November 12th 1813.

Pr. Jacob Hibshman D.S.

To Andrew Porter Esqr.  
Surveyor General.

IN TESTIMONY that the above is a copy of the original remaining on file in  
the Department of Internal Affairs of Pennsylvania, made  
conformably to an Act of Assembly approved the 16th day of  
February, 1833, I have hereunto set my Hand and caused  
the Seal of said Department to be affixed at Harrisburg,  
this twentieth day of September 1906

*Isaac D. Brown*  
Secretary of Internal Affairs.